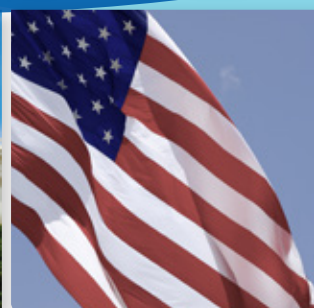


Legislative Principles



Securing Your Water Supply



"It is the mission of Western Municipal Water District to provide water supply, wastewater and water resource management to the public in a safe, reliable, environmentally sensitive and financially responsible manner."

Serving a population of nearly 1 million residents in western Riverside County in Southern California's Inland Empire, Western Municipal Water District is a leader in efforts to secure and create reliable water supplies for the region.

Working collaboratively with our elected officials and regional partners, Western seeks to protect and advance our customers' interests in the legislative and regulatory arenas. The Western Municipal Water District Board of Directors adopted the following government affairs principles to successfully and effectively address challenges and to maximize opportunities for the District and the region.

Financial Stability

- Protect and advance local governance and transparency
- Protect local revenue sources and reserve funds
- Support expanding federal and state funding for essential water and sewer infrastructure

Water Supply Reliability

- Support expanded options for local supply development
- Support funding for cost-effective water use efficiency and conservation measures
- Support the timely and full implementation state water policies adopted in the historical water package of 2009

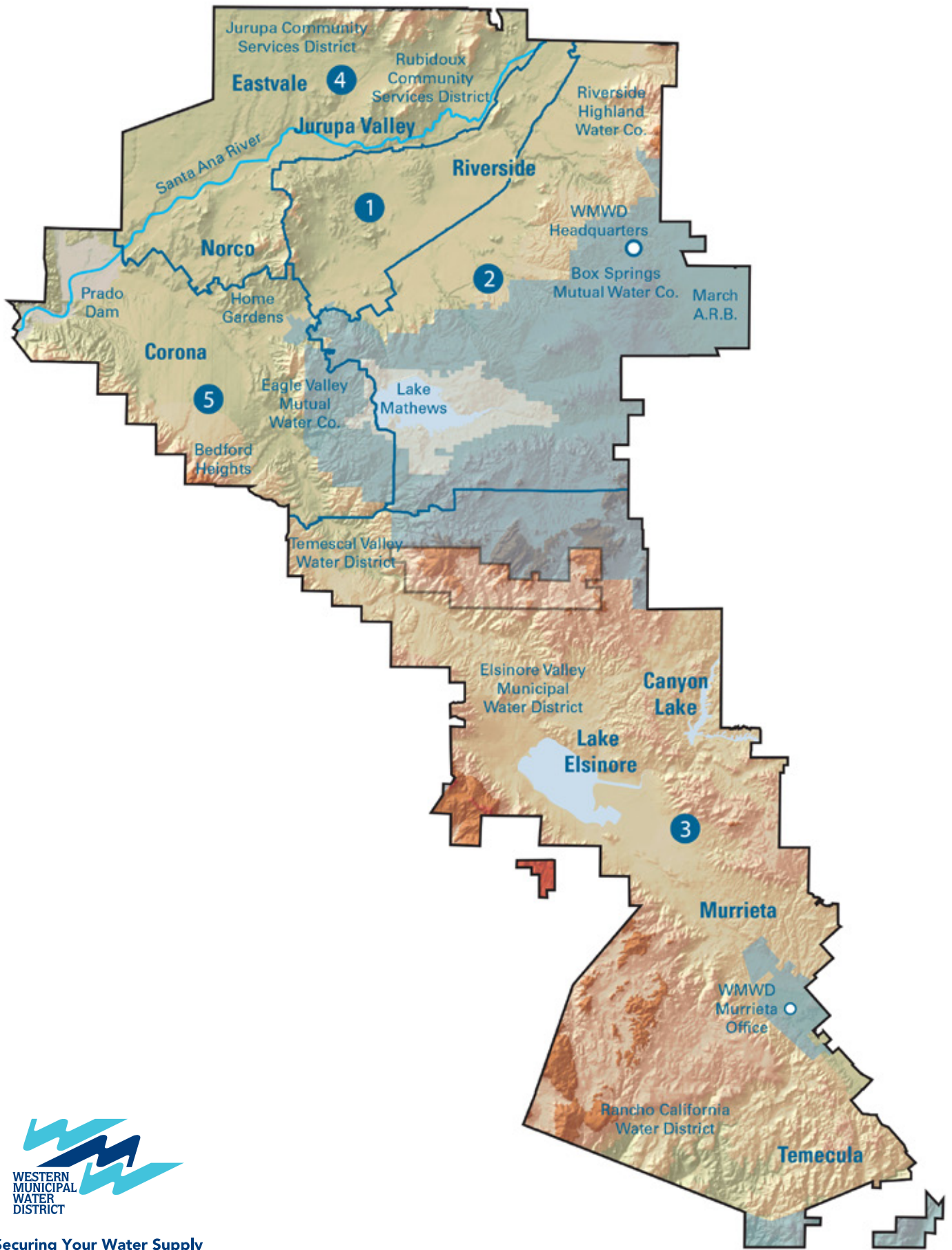
Efficiency in Service Delivery

- Support streamlining of federal and state regulatory and/or reporting mandates
- Minimize cost impacts of new or expanded regulations
- Monitor and respond to proposed expansions of regulations



For more information,

Craig D. Miller, General Manager
Michael Hadley, Government Affairs
951.571.7226, mhadley@wmwd.com
Western Municipal Water District
14205 Meridian Parkway
Riverside, CA 92518
951.571.7100
wmwd.com



Securing Your Water Supply