

Victoria Recharge Basin Project

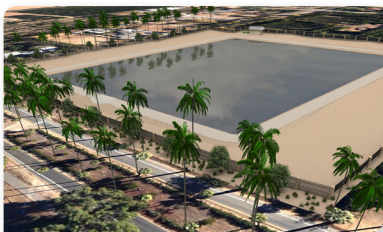


Securing Your Water Supply



Did you know:

- The basin will recharge up to 2,500 acre-feet of stormwater, nonpotable water and potential recycled water in the future.



Design rendering

The Victoria Recharge Basin Project, located off of Victoria Avenue and Jackson Street in Riverside.

Building the Victoria Recharge Basin creates drought resiliency for our region

The Victoria Recharge Basin is an essential part of the infrastructure in our region and will create a new, local and drought-proof water supply for our customers as well as regional residents.

Western is constructing the Victoria Recharge Basin Project to stabilize the Arlington Groundwater Basin. This project will allow Western to use its Arlington Desalter to treat brackish groundwater at its full capacity of 7,200 acre-feet per year, and the water produced will go to the cities of Norco and Corona.



Design rendering

Project Benefits

- Increase groundwater storage through the capture and recharge of high-quality stormwater that would otherwise be lost.
- Increase use of the Arlington Desalter's production capacity.
- Improve groundwater quality and water management of the Arlington Basin.
- Increase system reliability in the event of imported water disruption.

The project cost is \$10 million. To date, Western has received grants totaling \$3 million from the Riverside County Flood Control and Water Conservation District, Santa Ana Watershed Project Authority and the Bureau of Reclamation.



Community Affairs Office
outreach@wmwd.com
951.571.7255

Western Municipal Water District
14205 Meridian Parkway
Riverside, CA 92518
wmwd.com